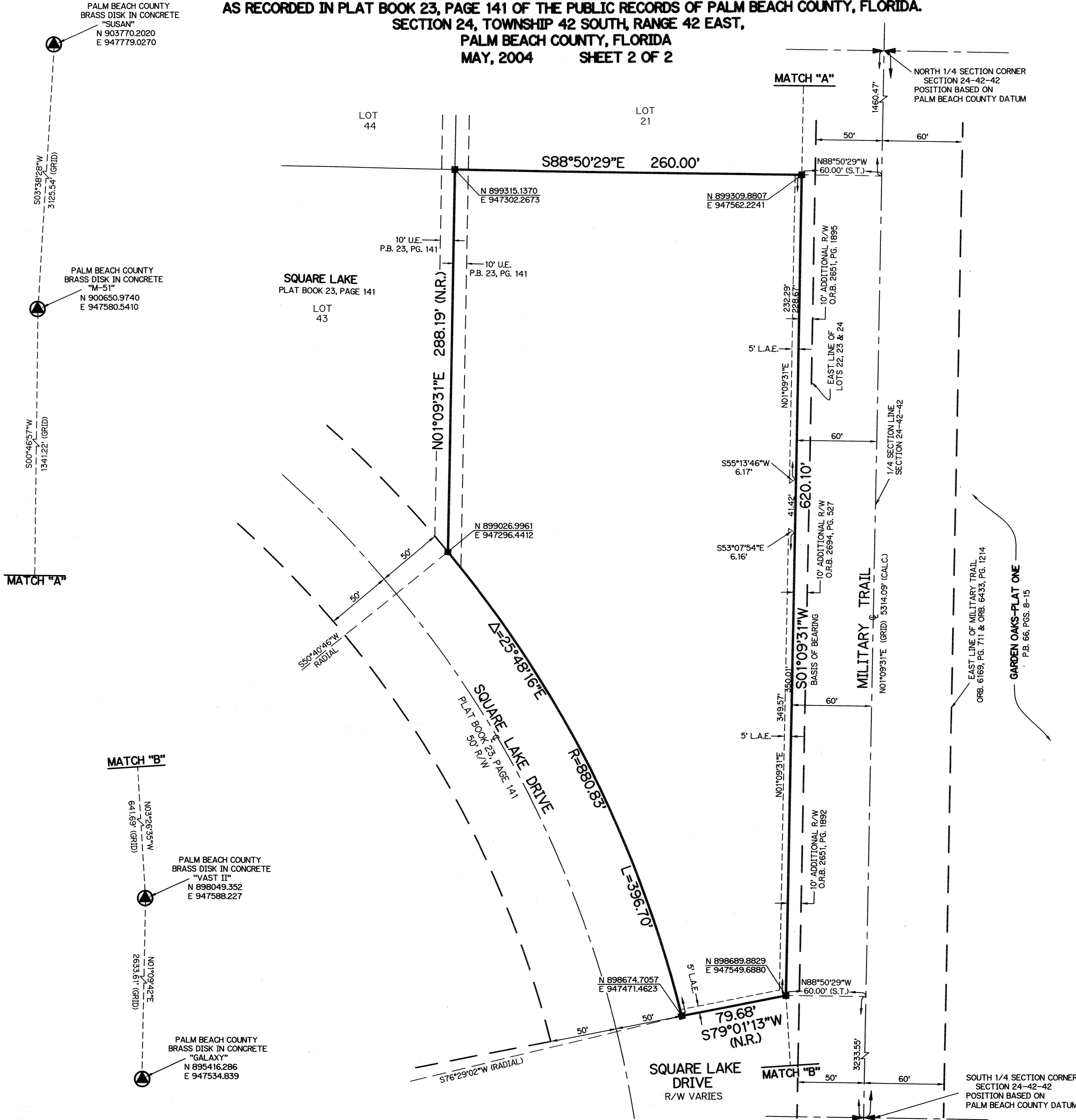


SQUARE LAKE NORTH- M.U.P.D.

BEING A REPLAT OF A PORTION OF LOTS 22, 23 AND 24, SQUARE LAKE
AS RECORDED IN PLAT BOOK 23, PAGE 141 OF THE PUBLIC RECORDS OF PALM BEACH COUNTY, FLORIDA.
SECTION 24, TOWNSHIP 42 SOUTH, RANGE 42 EAST,
PALM BEACH COUNTY, FLORIDA
MAY, 2004 SHEET 2 OF 2

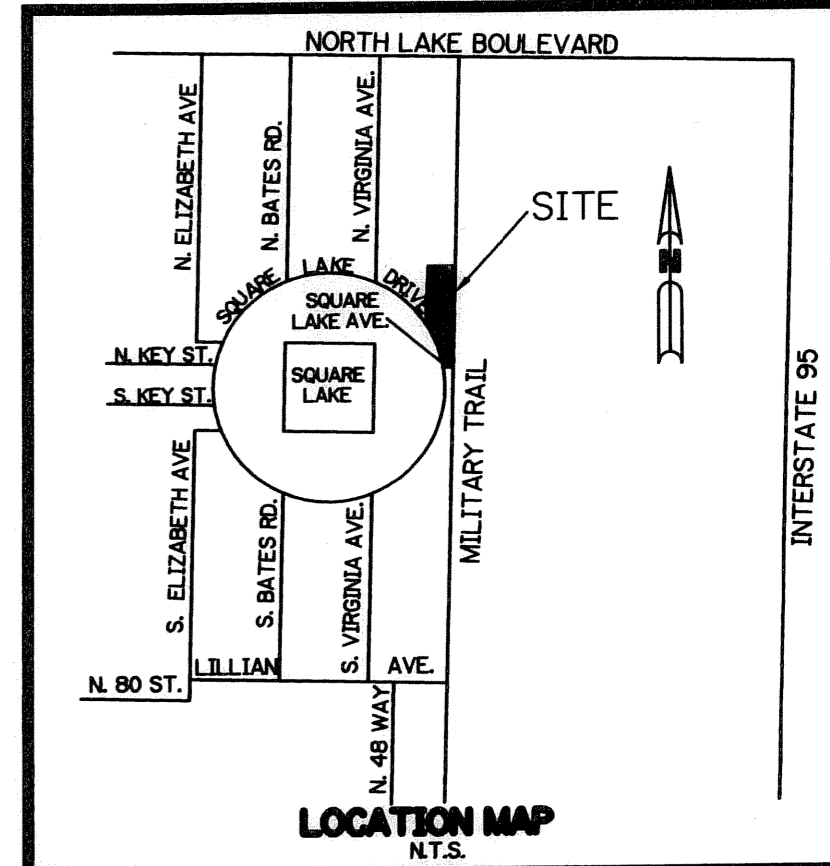


- LEGEND:**
- - SET PERMANENT REFERENCE MONUMENT, L.B. #6674
 - △ - DELTA ANGLE
 - L - ARC LENGTH
 - R - RADIUS
 - CB - CHORD BEARING
 - CH - CHORD DISTANCE
 - C - CENTERLINE
 - L.A.E. - LIMITED ACCESS EASEMENT
 - L.M.A.E. - LAKE MAINTENANCE ACCESS EASEMENT
 - L.M.E. - LAKE MAINTENANCE EASEMENT
 - N.R. - NOT RADIAL
 - N.T.S. - NOT TO SCALE
 - O.R.B. - OFFICIAL RECORD BOOK
 - P.B. - PLAT BOOK
 - PGS. - PAGES
 - P.S.M. - PROFESSIONAL SURVEYOR AND MAPPER
 - N.R. - NON-RADIAL
 - RAD. - RADIAL
 - R/W - RIGHT-OF-WAY
 - U.E. - UTILITY EASEMENT
 - S.T. - SURVEY TIE
 - N 737648.0171
E 905258.2326 - DENOTES STATE PLANE COORDINATES

NOTE:

COORDINATES SHOWN ARE GRID COORDINATES
DATUM = NAD 83 (1990 ADJUSTMENT)
ZONE = FLORIDA EAST ZONE
LINEAR UNIT = U.S. SURVEY FEET
COORDINATE SYSTEM 1983 STATE PLANE
TRANSVERSE MERCATOR PROJECTION
ALL DISTANCES ARE GROUND
SCALE FACTOR = 1.0000383
N 01°09'31" E (PLAT BEARING)
N 01°09'31" E (GRID BEARING)
NO ROTATION

THIS INSTRUMENT PREPARED BY
WILBUR F. DIVINE, P.S.M. 4190, STATE OF FLORIDA
LAWSON, NOBLE AND WEBB, INC.
ENGINEERS PLANNERS SURVEYORS
420 COLUMBIA DRIVE
WEST PALM BEACH, FLORIDA 33409
LB-6674



5713-000

SUBDIVISION Square Lake North M.U.P.D.
BOOK 102
FLOOD ZONE B
QUAD # 2A
SE
TAZ 109
FUD NAME SQUARE LAKE

PAGE 13
FLOOD MAP # 130 B
ZONING M.U.P.D.
ZIP CODE 33418